

Wood Fireplace Inserts

Green Mountain Insert 90 Model 8460

Our large flush insert combines stylish cast iron with our signature soapstone lining.


Efficiency

64%
HHV


HeatLife™

8
Hours


EPA Certified

1.22
g/hr



Shown in matte black with the optional steel surround

Features

Enameled cast iron

The flush cast iron front of the GMI 90 is available in matte black or our brown enamel finish.

Soapstone firebox

Burn up to 20 inch logs in the soapstone lined firebox. Soapstone retains the maximum heat from you fire and radiates steady warmth as your insert burns.

Simple operation

Our non-catalytic wood insert is easy to use. A single lever air control lets you burn hot and fast or low and slow to keep warm through the night.

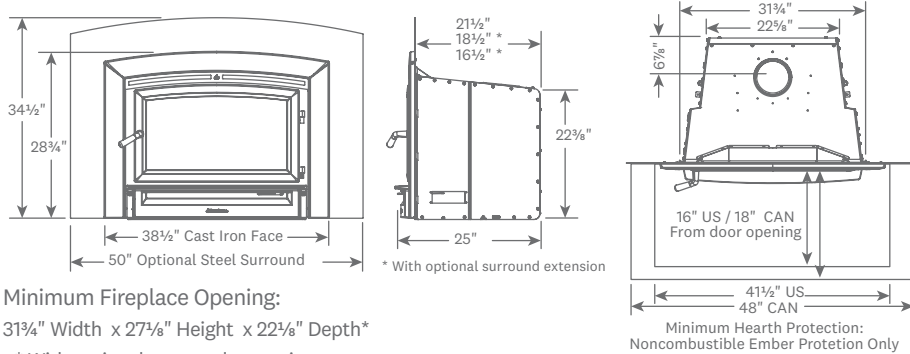
Wood Fireplace Insert

GMI70 8460



GMI 90 shown in brown enamel with the optional steel surround, accessory 94-5960010.

Dimensions & Installation

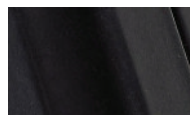


Minimum Fireplace Opening:
 31¾" Width x 27⅞" Height x 22¾" Depth*
 * With optional surround extension

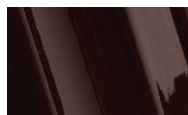
Clearances

Combustible mantel from insert bottom - 40¼"
 To side trim from side of insert body - 9½"
 To side wall from side of insert body - 19"

Finish Options



Matte Black



Brown Enamel

* See the Accessories section at the end of the catalog for more information.

Specifications

HHV Efficiency	64%
HeatLife™*	8 hours
EPA Certified	1.22 g/hr
Heats up to.....	2,200 sq ft
Firebox Capacity.....	2.5 cu ft
BTU.....	Up to 80,000
Maximum Log Length	20"
Flue Exit & Diameter.....	Top - 6"
Convection Blower.....	Included

Accessories†

Steel Surround.....	94-5960010
Surround Extension.....	94-5960110
Outside Air Adapter Kit	94-53600
Fire Screen Insert.....	94-69600
Mantel Shield	94-79700
Liner Hook-Up Collar	94-67500
Offset Liner Adapter	5700-007

* Under the right conditions, you will be able to start a new fire with kindling up to the end of the product's HeatLife™.